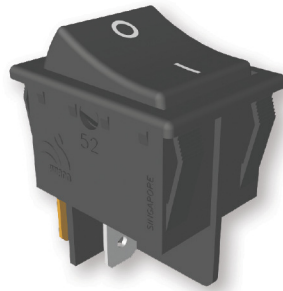


SERIES 52

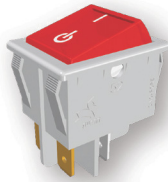
52系列



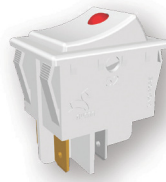
52 scallop button 3 position



52 standard frame & cap



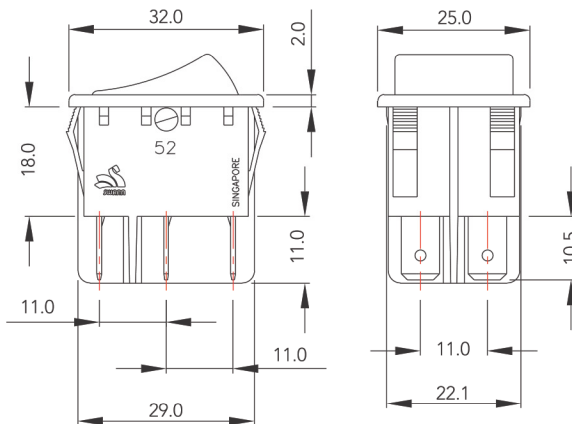
52 flat button



52 round lens

Dimensions (mm)

产品尺寸



Ratings & Approvals

额定负载 与安全认证

	20A 125VAC, 15A 250VAC
	16(6)A 250V~
	16(6)A 250V~

Rating for 52D# only

	16A 125VAC, 12A 250VAC
	16(6)A 250V~

RoHS

RoHS Compliant

Panel Cutout (mm)

面板尺寸

Panel Thickness	L (+0.1)	W (+0.1)
1.0 (Min.)	30.0	22.5
3.0 (Max.)	30.2	22.5

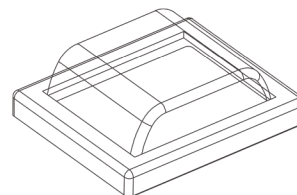
Circuits

电路

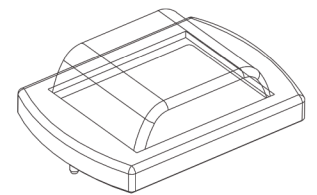
A	B	C	C2	D	G
on-off	on-on	(on)-off	(on)-on	on-off-on	on-off illuminated at on
					() Momentary 自动复位
Single Pole versions of all the above functions are also available 上述所有多极电路也有单极的模式					

Protection Cap (Design to IP65)

保护罩 (设计符合IP65)



Standard Frame & Cap



Rounded Frame & Cap

Electrical Properties

电气性能

Contact Gap	≥ 3mm
Insulation Spacing	≥ 8mm
Contact Resistance	< 20mΩ initially
Dielectric Strength	Up to 3.5 kV
Insulation Resistance	> 50MΩ (500VDC between the open contacts) initially
Electrical Life	≥ 20,000 cycles at full load
Resistance to Tracking	PTI 250

Mechanical Properties

机械性能

Glow Wire Test	850°C (category D)	
Flammability	UL 94V-2 minimum	
Mechanical Life	≥ 100,000 cycles	
Material	Button/Body Transparent Button Terminals Contact	Nylon 6/6 Polycarbonate Copper Alloy Silver Alloy

Product Ordering Code

产品定货代码

Illustration: 52 **G** **B** / **Ar** - **S** **1** **250V** **QC** **U/C/V**

52 / -

Circuits* 电路	Code	Body Color 主体颜色	Code	Button Color 按钮颜色	Code	Button Style 按钮样式	Code	Legends 标志	Code	Lamp Voltage 灯泡电压	Code	Terminals 端子	Code
on-off	A	Black	B	Black	B	Scalloped	S		1	None		6,3x0,8mm Quick Connect	QC
on-on	B	White	W	White	W	Flat	F			125VAC	125V		
(on)-off	C	Bisque	Bs	Bisque	Bs				3	125/250VAC	250V		
(on)-on	C2			Red	R			12VDC	12V				
on-off-on	D			Green	Gn			24VDC	24V				
on-off illuminated at on 带灯	G			Amber	Ar								
() Momentary 自动复位									4				
									5				
									6				
									7				
									8				
									9				
									10				
									11				
									12				
									13				
									14				
									15				
									16				
									17				
									RLens				

Rated Load 额定负载	Code
UL/CSA 20A 125VAC	U/C/V
15A 250VAC	
CSA ½HP 125/250VAC	
VDE 16(6)A 250V~	
CQC 16(6)A 250V~	
Rating for 52D# only	
cULus 16A 125VAC	CU/V
12A 250VAC	
VDE 16(6)A 250V~	

* Single Pole versions of all the above functions are also available 以上所有多极电路也有单极的模式
Please refer to Swann for colors, legends or configurations not listed above 以上未列出之颜色,标志及配置结构,请联络索尔安查询