



88 Series Thermal Circuit Breaker

Single Pole Push to Reset



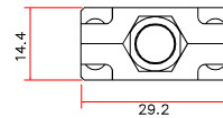
•Technical data

- Current rating range 3~30A
- Input voltage rating 125/250VAC; 32/50VDC
- Interrupting Capacity 125/250VAC x 1,000A(UL 1077)
- Typical life 1,000 operations at 200% overload.
- Insulation co-ordination Rated impulse withstand voltage 2.5kV
- Dielectric Strength > 1.500VAC/min.
- Insulation Resistance >100MOHM (DC 500V)
- Degree of protection Terminal area IP00, operating area IP40



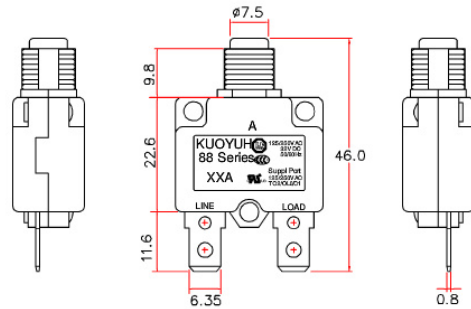
•Mechanical/Environmental Data

- Operating Ambient Temperature: -10°C to +60°C
- Termination: 250"(6.35mm) quick connects or solder terminals
- Mounting: Various options. See Ordering Information and drawings



•Compliance with Rohs

The product accords with the requirement of ROHS (2011/65/EU)
Contacts use Exempted item of RoHS Directive 2010/571/EU 8(a)



•Compliance with REACH, PAHS, PH1, PH2, PH3

- Ignition Proof Yes, UL PEQZ2.E155159

•Typical applications

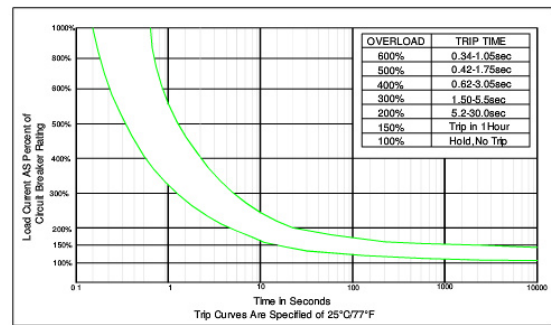
Transformers, Motors, Battery chargers, Power supplies, appliances, extra low voltage systems, machinery.

•Calibration(at25°C)

- 100% of Rated Current: Hold , No Trip
- 150% of Rated Current: Trip Within 1 Hour.
- 200% of Rated Current: 5-30 sec Trip
- 300% of Rated Current: 1.5-5.0 sec Trip

* Dimension in mm:

•88 Series 3A-30A Trip Time Curves



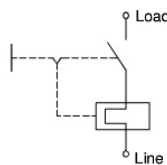
•Approval

Approval & File No.	Rated current	Rated voltage
•CUL UL E155159	3-30A	125/250VAC; 50VDC
•TUV SUD B15 09 58611 007	3-20A	125/250VAC; 32VDC
•CCC 201101030752058	3-20A	125/250VAC.
•VDE 40036160	3-16A	125/250VAC
•CSA 102199	3-16A	125VAC

•Max. Internal Resistance

Amp rating	Max resistance
3.0 - 5.0Amp	<0.225 Ohms
6.0 - 8.0Amp	<0.175 Ohm
9.0 - 12.0Amp	<0.125 Ohm
13.0 - 16.0Amp	<0.050 Ohm
17.0 - 20.0Amp	<0.040 Ohm
21.0 - 25.0Amp	<0.030 Ohm
26.0 - 30.0Amp	< 0.020 Ohm

•Internal connection diagram



•Ambient Temperature Correction Factor

Ambient temperature	-10°C	0°C	10°C	25°C	35°C	40°C	50°C	60°C
Multiplication factor	*1.30	*1.20	*1.10	1.00	*0.94	*0.85	*0.73	*0.68

The time/current characteristic curve depends on the ambient temperature prevailing. In order to eliminate nuisance tripping. Please multiply the circuit breaker current ratings by the derating factor shown below.

Example : Normal Continuous Current = 10A
Ambient Temperature = 45°C
Multiplication Factor = 0.85
Recommended Rating= 10A/0.85=11.8A
Select the Nearest Rating = 12A

* The specification subject to change without notice. The drawing is for reference only.

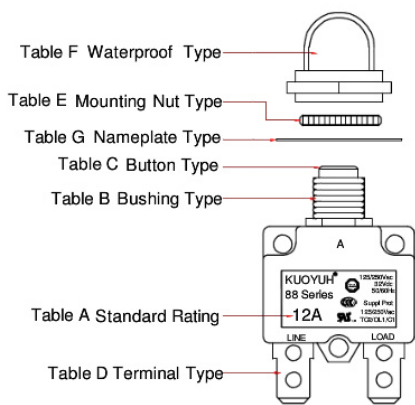




Order Guide	88- 12- A1 B 1 4- P 0 0 N B
Series No.	
Amp Rating.	(Table A)
Bushing Type.	(Table B)
Color of Button.	(Table C)
Terminal Type.	(Table D)
Voltage.	1=UL & CSA 125Vac, 2=TUV & CCG 250Vac, 3=1+2 125/250Vac, 4=UL+TUV+CCG 125/250Vac; 32Vdc, 5=Client designation 6=UL 125/250Vac; 50Vdc, 8=VDE 125/250Vac, 9=CSA 125Vac U3 type
Mounting Nut Type.	(Table E)
Waterproof Type.	(Table F)
Nameplate Type.	(Table G)
Terminal Finish.	S=Plate with Tin N=Plate with Nickel 0=No plate
Body Type.	B=Black W=White

03= 3.0A	12= 12.0A
3.5= 3.5A	13= 13.0A
04= 4.0A	15= 15.0A
05= 5.0A	16= 16.0A
06= 6.0A	17= 17.0A
07= 7.0A	18= 18.0A
08= 8.0A	20= 20.0A
09= 9.0A	22= 22.0A
10= 10.0A	25= 25.0A
11= 11.0A	30= 30.0A

P1 Plastic M11XP1.0	P2 Plastic M12XP1.0	P3 Plastic 3/8"-27T	PL Plastic No thread
KF Plastic Snap in	PS Plastic Snap in	AW (White) Plastic No thread	P0 Plastic No thread
A1 Metal M11XP1.0	B1 Metal M11XP1.0	A3 Metal 3/8"-27T	B3 Metal 3/8"-27T



P1,A1,B1	A2,P2	P3,A3,B3	AW/AB	P0	PS,KF
-----------------	--------------	-----------------	--------------	-----------	--------------

B = Black button (黑推桿)	W = White button (白推桿)	R = Red button (紅推桿)
Normal Amp stamp Amps=black	Normal Amp stamp Amps=black	NORMAL AMP STAMP Amps=white
1	5	6
7	8	9
X	Y	Z

0 None	P Plastic	Q Plastic	A Metal	B Metal	4 Metal	5 Metal	6 Metal
---------------	------------------	------------------	----------------	----------------	----------------	----------------	----------------

0 None	R	M	V	F	T	U
---------------	----------	----------	----------	----------	----------	----------

0 None	B Black plate	A Black plate	S White plate	C Black plate	L Black plate
W White plate			X White plate		
				For 3/8"-27T	For Waterproof

1 Straight 11.8mm	2 90° bend	3 90° bend	4 Live pin Straight Lead pin 90° bend	5 Live pin 90° bend Lead pin Straight	6 Straight 8.0mm	7 Live pin 90° bend down Lead pin bend up	8 45° bend up	9 45° bend down	X Straight 4.0mm	F Screw #8-32 Straight	L Screw #8-32 90° bend up	J Screw #8-32 90° bend down	G Live pin Screw 90° bend Lead pin 90° bend Straight	K Live pin Screw 90° bend Lead pin Screw 90° bend Straight	H Live pin Screw 90° bend Lead pin Screw Straight
--------------------------	-------------------	-------------------	--	--	-------------------------	--	----------------------	------------------------	-------------------------	-------------------------------	----------------------------------	------------------------------------	---	---	--

* The specification subject to change without notice. This drawing is for reference only.

KUOYUH W.L. Enterprise Co., Ltd.
 No. 17 Kojia 6th Road Douliu City Yunlin Hsien 64097 Taiwan R.O.C
 http://www.kuoyuh.com.tw sales@kuoyuh.com
 Taiwan Tel: 886 5 551 3222 Fax: 886 5 551 3030
 China Tel: 86 769 8366 6388 Fax: 86 769 8366 6362
 Issue: F1
 Date: 2017.02.20



64057 雲林縣斗六市科加六路17號